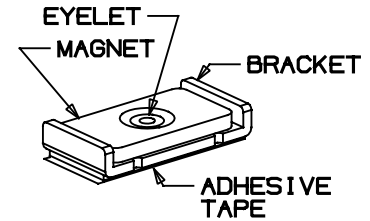
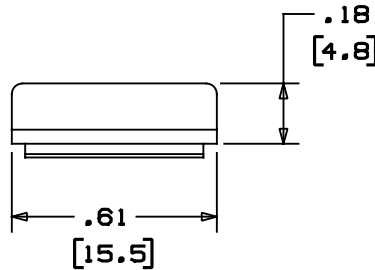
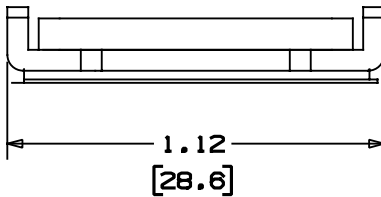
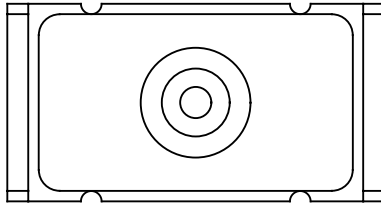


THIS COPY IS PROVIDED ON A RESTRICTED BASIS AND IS NOT TO BE USED IN ANY WAY DETRIMENTAL TO THE INTERESTS OF PANDUIT CORP.

PANDUIT P/N	WEIGHT
CBM-X	2.08 LB/100 PCS (945 g/100 PCS)

NOTES:

- SEE CURRENT CATALOG FOR ADDITIONAL PART NUMBER SUFFIXES TO INDICATE PACKAGE QUANTITY.
- CAN BE USED WITH VARIOUS TYPES OF PAN-NET SURFACE MOUNT BOXES APPLIED TO METAL SURFACES.
- ADHESIVE PRESSURE SENSITIVE FOAM .040 (1.0) THICK WITH PROTECTIVE LINER IS PROVIDED FOR EASE OF MOUNTING ON APPLICABLE PAN-NET SURFACE BOXES.
- DIMENSIONS IN PARENTHESES ARE IN METRIC.



CAD FILENAME/LAYERS D35543BF_CBMLX_C_00

PANDUIT CORP. TINLEY PARK, ILLINOIS

MAGNET WITH ADHESIVE BACKING (CBM-X)
CUSTOMER DRAWING

UNLESS OTHERWISE SPECIFIED,
DIMENSIONAL TOLERANCES ARE:
(.X) ± (.XXX) ±.010 (.3)
(.XX) ±.03 (.8) ANGLES ±

UNLESS OTHERWISE SPECIFIED,
ALL DIMENSIONS ARE GIVEN
IN INCHES, THIRD ANGLE PROJECTION.

DRAWN BY DW	MAT'L'S	SCALE NONE	DWG A
DATE 5-03-96	CHECKED BY	DRAWING NO. 35543-06	SIZE A

REV	DATE	BY	CHK	DESCRIPTION	ECN	CHK	CUST	SUP
R	5-03-96	DW		RELEASED TO PRODUCTION.	35543-06			